

## CRICKET RX5 RESORT TOP WITH QUICK RELEASE INSTRUCTIONS

1. Remove the side cover panels. After doing so, place the two slim silver spacers onto the posts on the quick release brackets and slot the brackets into the two side holes where the covers were removed. Finger-tighten the washer and lock nut onto the rear posts of the brackets.

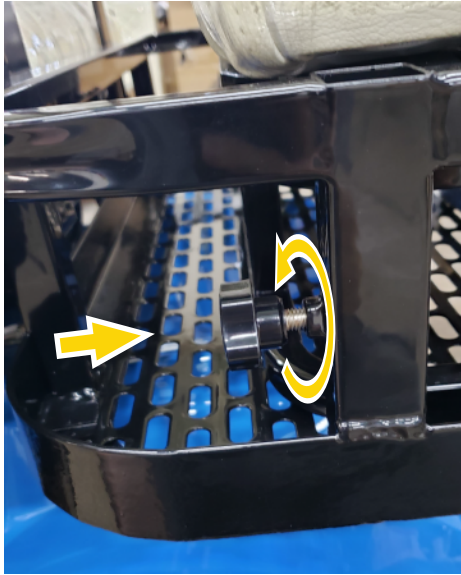


2. Slot the vertical rails with the slight bend at the base into the quick release brackets. After placing the plastic and metal gromet on the quick release bolts with the plastic facing the lever, screw the bolts through the quick release bracket into the bent vertical bar. Use the lever to secure the quick release.





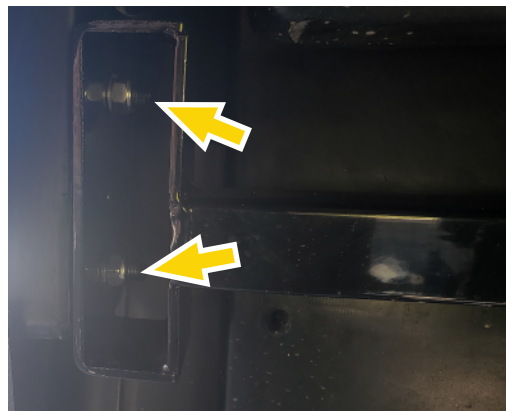
3. Loosen the thumb knobs on either side of the rear basket, insert the rear vertical rail with the bend facing forward on both sides, and leave the thumb screws loose. The frame should look like the image on the right at this point:



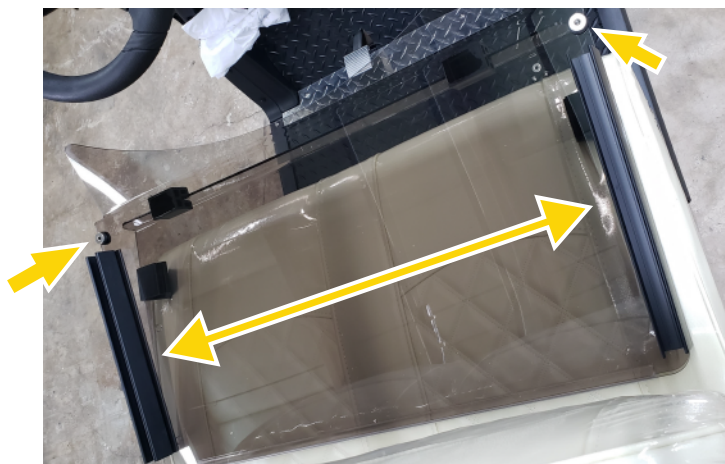
4. With the rear view mirror mount on the top frame facing the front of the cart, loosely fasten the four short bolts with a washer on either side into the four holes on the rear part of the frame with the nylock nuts. Do the same with the four long bolts on the front, but be sure to place the black spacer between the vertical bar and the top frame as pictured below.



5. With all of the top frame bolts in place, tighten all of them using a 14mm socket or wrench on the bolts and a 13mm socket or wrench on the nylock nuts. Be sure to tighten up the nylock nuts on the quick release bracket posts as well.

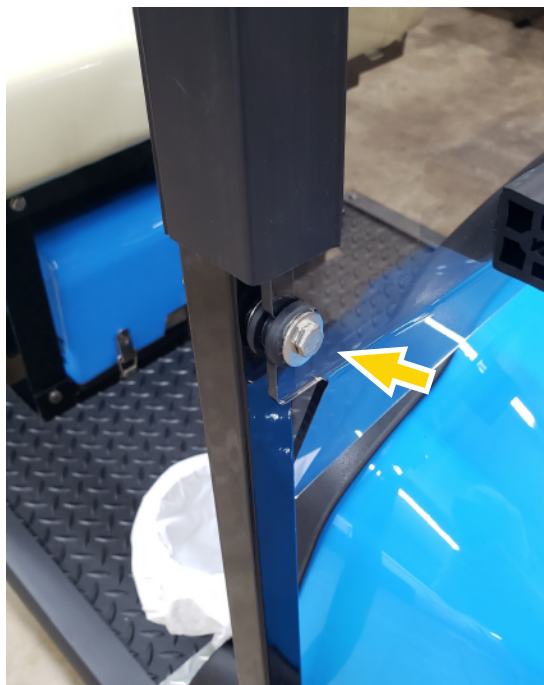


6. With all bolts tightened, install the black plastic clips and rubber grommets on each side of the lower half of the windshield.

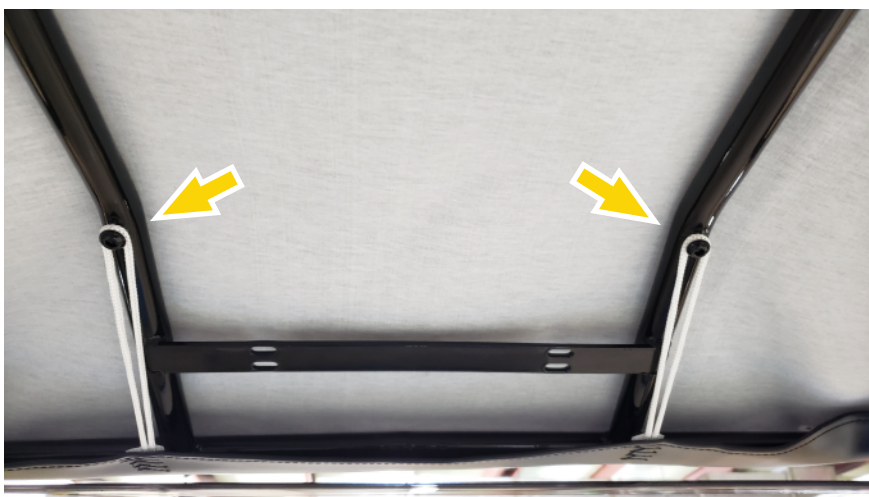




7. Align the black plastic clips with the front vertical rail and snap them into place. Slide the windshield up or down until the hole in the rubber grommet matches the hole in the front vertical rail. Insert the bolt and tighten the hardware down using a 10mm wrench or socket. With the windshield installed, you may remove the protective film if you have not already.



8. Install the vinyl top with the round pocket and 2 nylon loops towards the front of the cart. Slide the pocket over the front of the frame and affix the nylon loops to the posts on the underside of the top frame. In the rear, pull the vinyl top over each corner and affix the nylon loops to the posts on each rear vertical rail. Do not forcefully pull the loops. If there is too much slack in the loop, twist or tie the knot in the middle.





9. Insert the black rubber rail end plugs into the top end of the four rails.



10. With the vinyl top installed, all bolts tightened, windshield in place, and quick release secure, you are ready to go with your new Cricket RX5 resort top with quick release!



**If you need any further assistance, please contact your official Cricket dealer.**

## PARTS LIST

- 2× Quick Release Bent Vertical Front Rails
- 2× Vertical Rear Rails
- 1× Resort Top Front Frame
- 1× RX5 Front Windshield with Hardware
- 1× RX5 Top Material (Black, White, or Custom)
- 2× Quick Release Rail Brackets
- 4× Quick Release Bolts
- 4× Long Top Frame Bolts
- 4× Short Top Frame Bolts
- 4× Black Metal Spacers
- 4× Silver Metal Spacer
- 4× Rubber Rail End Plugs
- 12× Nylock Nuts
- ~20-28× Washers

