



SALES • SERVICE • PARTS • ACCESSORIES • UPGRADES

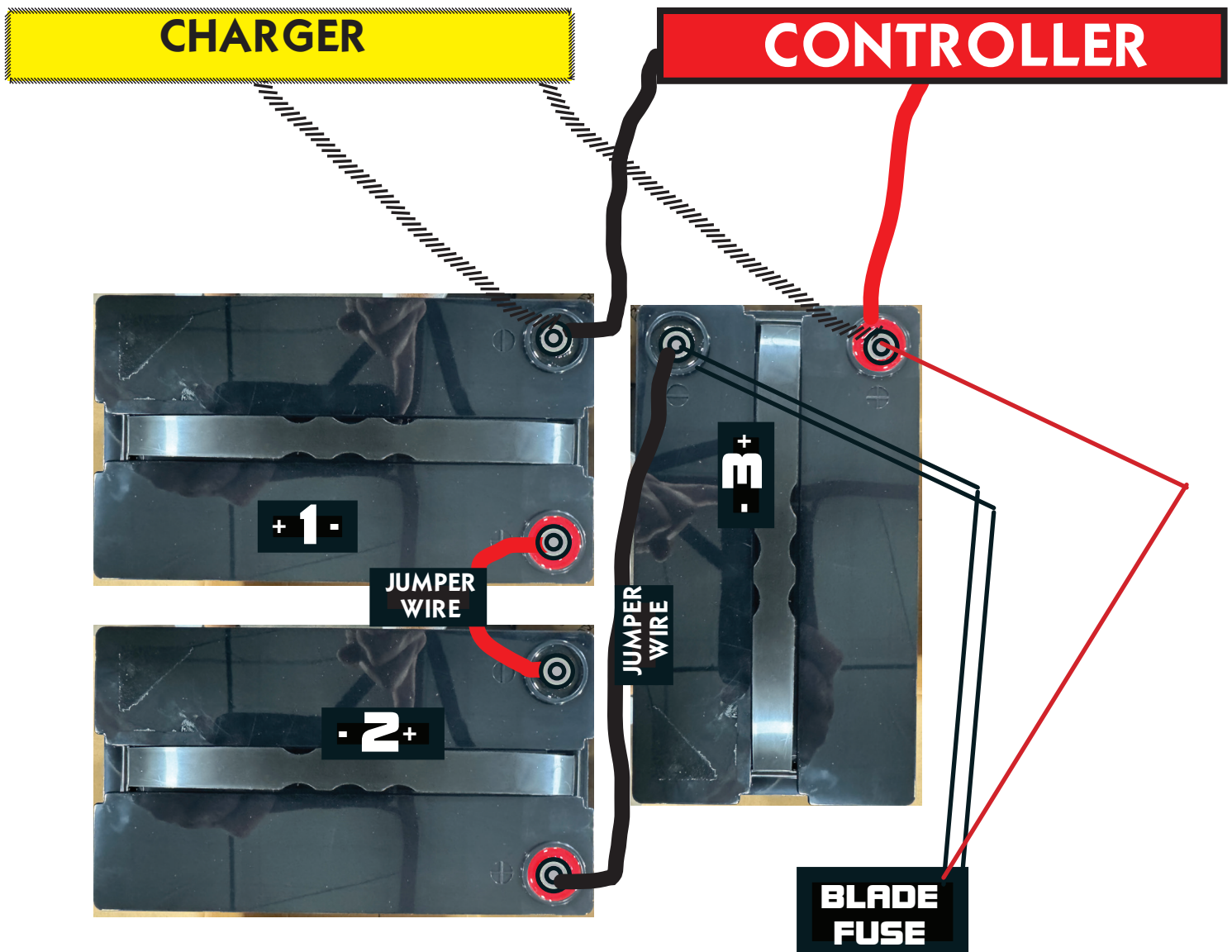
888-795-2278

CRICKETMINIGOLFCARTS.COM

WIRE: USE OLD EXISTING JUMPER WIRE FOR 1 to 2 CONNECTION,
USE LONG JUMPER WIRE FOR 2 to 3 CONNECTION

CHARGER: NEGATIVE WIRE TO (BATTERY 1) NEGATIVE POST
POSITIVE WIRE TO (BATTERY 3) POSITIVE POST

ATTN: ATTACH RED POWER WIRE TO CONTROLLER LAST



CRICKET MINI GOLF CARTS, INC.

506 FENTRESS BLVD, SUITE R | DAYTONA BEACH, FL | 32114



SALES • SERVICE • PARTS • ACCESSORIES • UPGRADES

888-795-2278

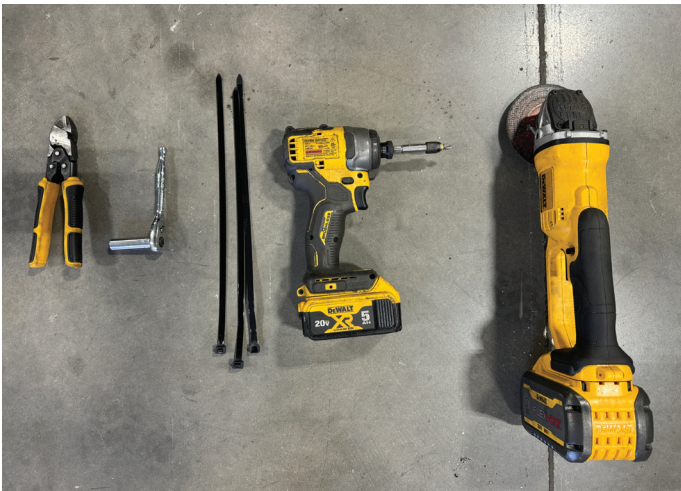
CRICKETMINIGOLFCARTS.COM

WIRE: USE OLD EXISTING JUMPER WIRE FOR 1 to 2 CONNECTION,
USE LONG JUMPER WIRE FOR 2 to 3 CONNECTION

CHARGER: NEGATIVE WIRE TO (BATTERY 1) NEGATIVE POST
POSITIVE WIRE TO (BATTERY 3) POSITIVE POST

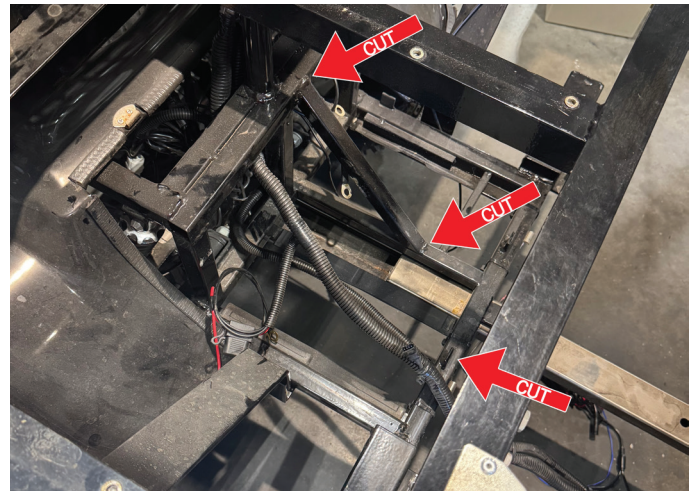
ATTN: DISCONNECT ALL BATTERY CONNECTIONS

TOOLS NECESSARY



1. Unscrew Charger Pan
2. Unscrew Controller Sealed Pan
3. Remove all Battery & Charger Connections
4. Remove Charger Pan from Cart
5. Tie Back Controller Pan to Back Seat
6. Cut all Zip Ties on Wiring Harness located on the Center Seat Frame Post.
7. Cut All Zip Ties on Center Slide System

FRAME REMOVAL



1. Cut the Center Brace Out
2. Cut the Passenger Side Battery Tab
3. Place New Lithium Batteries in place with battery diagram. (you will have small space behind rear battery from wiring harness)
4. Run Wire harness on top of batteries between passenger side and drivers side
5. Zip tie center slide first.
6. Zip tie all power cords back to center seat post.
7. Reinstall battery case carefully.

WARNING: DO NOT CHARGE BELOW 0°C/32°F | DO NOT DISCHARGE BELOW -20°C/-4°F



LITHIUM BATTERY

SPEC SHEET

LiFePO4

LITHIUM IRON PHOSPHATE BATTERY

MODEL: ECO.CRICK-36VSR

RATED CAPACITY: 50AH

RATED VOLTAGE: 12.8V

VOLTAGE RANGE: 10V - 14.6V

MAX CONTINUOUS CHARGE: 50A

MAX CONTINUOUS DISCHARGE: 75A

CHARGING VOLTAGE: MAX 18AMP

WEIGHT: 12LBS

PLEASE STORE CART WITH A
FULL CHARGE

PLEASE DO NOT LEAVE ON
CHARGER
FULL CHARGE: 4-5 HOURS

IT IS RECOMMENDED TO
CHARGE EVERY 3 MONTHS

